

'AF' CORNER ENTRY FITTING INSTRUCTIONS

1. Fit the shower tray ensuring it is level across all areas (Fig 1). Apply silicone sealant to the edges of the tray before and after tiling.
2. Take the wall posts and set 15mm in from the edge of the tray. Using a spirit level ensure that the wall posts are vertical and plumb (Fig 2). Mark the hole positions (Fig 3) remove and drill for wall plugs, then fit the plugs. Fix the wall posts into position using the 30mm screws supplied. Ensure that the screw collars are fitted to the screws beforehand.
3. Assemble the frame by fixing the top & bottom rails to the fixed glass panel by first sliding the glass clips into the groove in the top & bottom rails with the open end facing outwards (Fig 4). Then slide the glass seal into the groove until it is fully home and retained under the glass clip (Fig 5). Place the end caps on either ends of the rails making sure to snap out the top bar (Fig 6) (Sketch A) of the end cap at the glass ends only. Then push the glass fixed panel into the seals in the top & bottom rails (Fig 7) and fix by screwing through the aluminium posts into the rails using the 40mm screws (Fig 8).
4. Fit the rubber door stops using the 10mm round headed screws (Fig 9).
5. Carefully, lift the frame into the wall posts at both sides and locate the corner rail bracket into the end sections of the top & bottom rails (Fig 10). Fix the corner brackets using the 10mm screws supplied on the reverse of the rails. Taking care not to scratch the unit, mark and drill two 3.2mm holes 150mm from the top & bottom on the inside of the enclosure through the wall posts and frame (Fig 11). Secure with the 10mm screws, again ensuring that the collars are in place.
6. Fix the top wheels to the glass door ensuring the correct hand for installation by unclipping and lowering the cover cap. Undo the retaining nut and fix through the hole in the glass and re-tighten (Fig 12). Final adjustment can be made by slackening the nut when the assembly is complete.
7. Fix the bottom wheels into position by dis-assembling the wheel and placing the plastic saddle over the glass. Tighten in position through the hole in the glass. Place the spring over the spigot within the wheel housing (Sketch A) and slide the wheel onto the plastic saddle. Re-fit the cover cap (Fig 13).
9. Hang the doors onto the top rail making sure that the wheels are located in the channel (Fig 14). Then from the outside, push down on the spring loaded wheels and clip into position (Fig 15).
10. Cut to length the magnetic jointing strips and seal. Slide the magnetic strip onto the door edge (Fig 16).
11. Cut to length the two vertical water seals and clip into position on the glass doors and glass side panels (Fig 17).
12. Finish by fitting the handles, decorative caps supplied and apply silicone down the vertical edges of the wall channel, and the bottom edge between the bottom rail and tray. (Fig 18/19).

DO NOT SEAL THE ENCLOSURE ON THE INSIDE OF THE ENCLOSURE!

Fig. 1



Fig. 2



Fig. 3

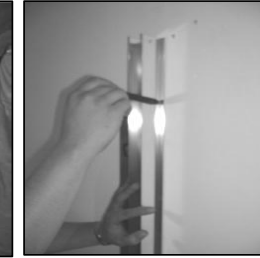


Fig. 4

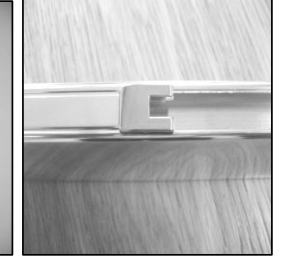


Fig. 5

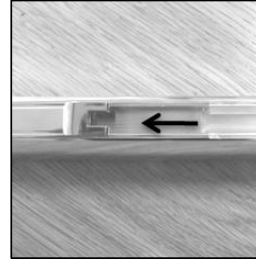


Fig. 6

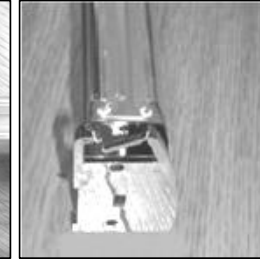


Fig. 7

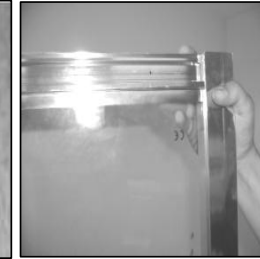


Fig. 8

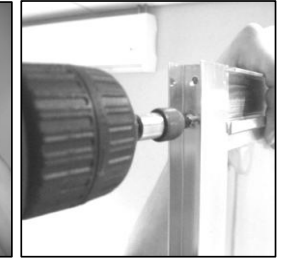


Fig. 9

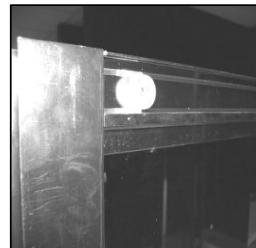


Fig. 10

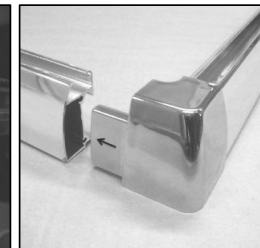


Fig. 11

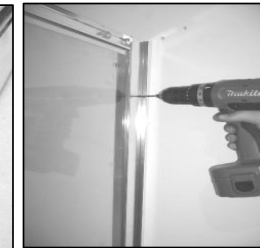


Fig. 12



Fig. 13

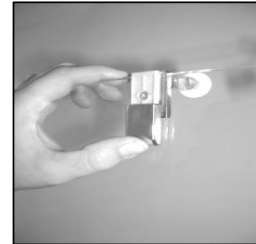


Fig. 14



Fig. 15



Fig. 16



Fig. 17



Fig. 19

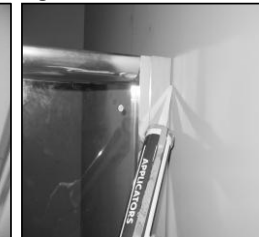
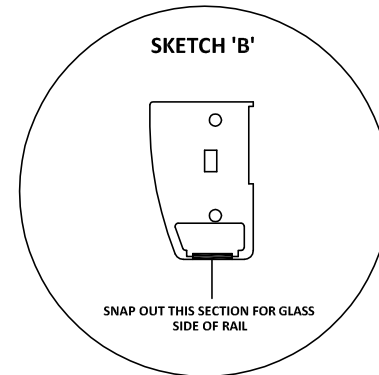
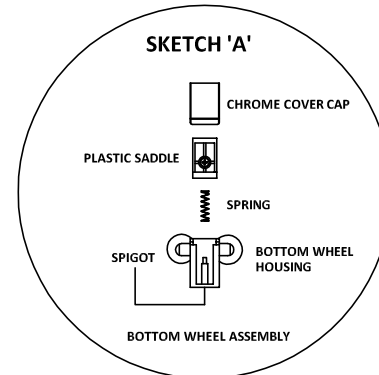
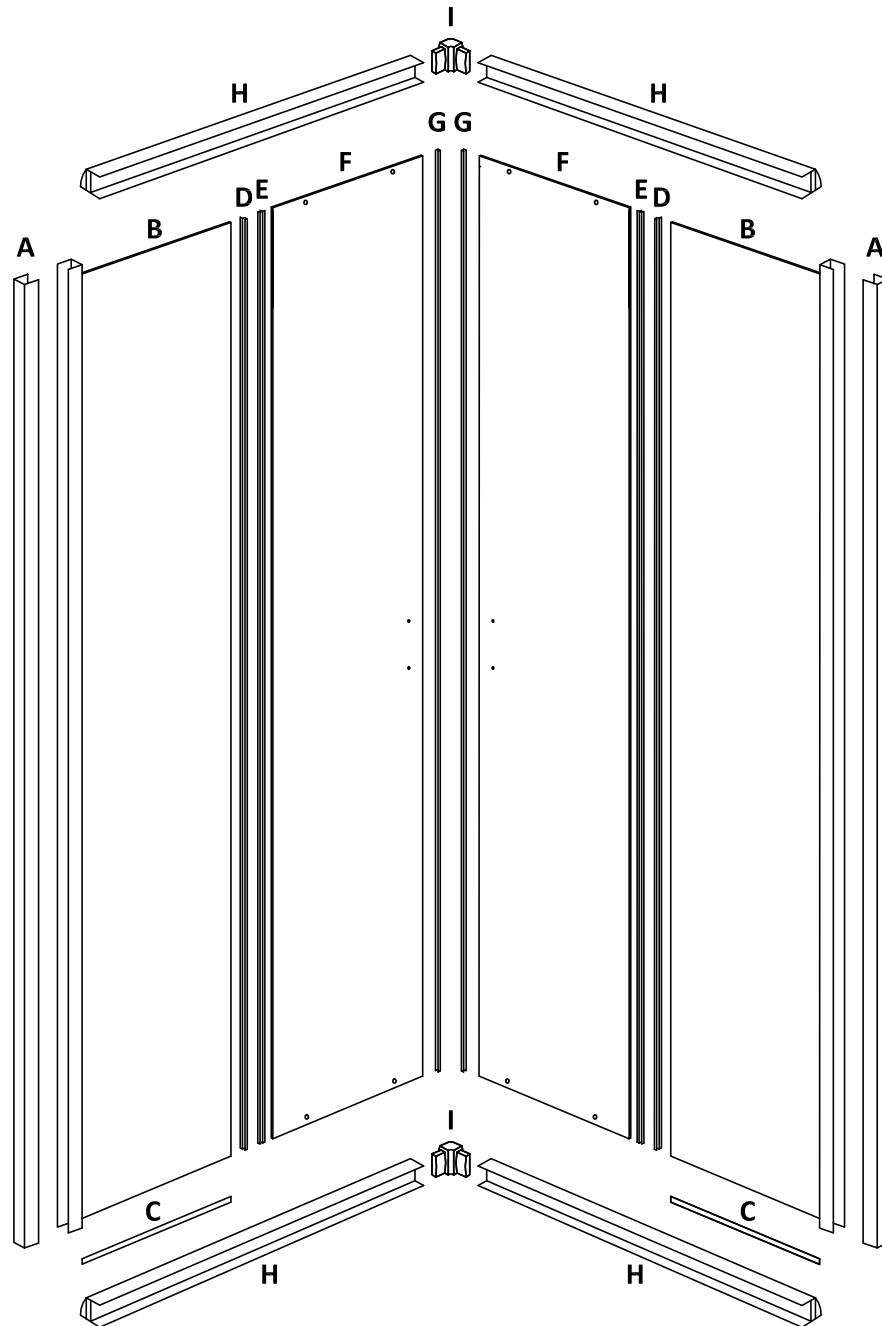


Fig. 20



AF CORNER ENTRY FITTING INSTRUCTION



ENCLOSURE PARTS LIST		
A	WALL CHANNEL	2
B	FIXED GLASS PANEL	2
C	GLASS SEAL	2
D	VERTICAL PANEL SEAL	2
E	VERTICAL DOOR SEAL	2
F	GLASS DOOR	2
G	MAGNETIC DOOR STRIP	2
H	TOP & BOTTOM RAILS	4
I	RAIL CORNER BRACKET	2

FITTINGS PARTS LIST		
	SCREW COLLAR	8
	SCREW COVER CAPS	8
	GLASS CLIP	4
	RUBBER DOOR STOP	8
	WALL PLUGS	6
	30mm SCREWS	14
	10mm SCREWS	16
	8mm SCREWS	8
	BOTTOM WHEEL ASSEMBLY	4
	TOP WHEEL ASSEMBLY	4
	TOP AND BOTTOM RAIL END CAPS R/H	2
	TOP AND BOTTOM RAIL END CAPS L/H	2
	WALL POST COVER CAPS	2
	DOOR HANDLE	2